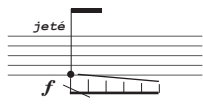


# double bass

echoic memory capsule (2019), by rama gottfried

rehearsal material

all examples are in notated in bass clef



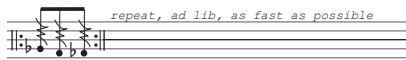
jeté or ricochet, a fast bouncing of the bow against the string, getting faster as the bouncing gets quieter. In this example, the left hand makes a glissando from A down towards the open string, while the bow bounces.



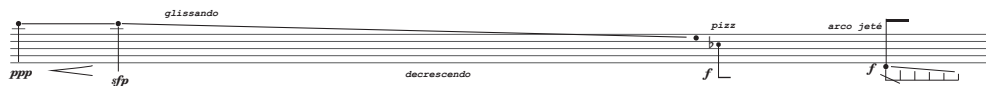
unmeasured tremolo, as fast as possible.



accidentals are not carried through to other notes.  
In this example the notes are: Ab Bb A Ab



repeat the sequence between the repeat marks, as fast as possible for the duration of the line that follows.



glissando, followed by a pizzicato and jeté



a natural harmonic, with the finger at the position indicated by the diamond note-head, and the string indicated by the roman numeral. In this example, the sounding note will be a D, one octave above the open II string.

the most difficult phrase in the piece:



if you have any questions please feel free to contact me at: [rama.gottfried@hfmt-hamburg.de](mailto:rama.gottfried@hfmt-hamburg.de)